



Subscribe to SOM Updates 

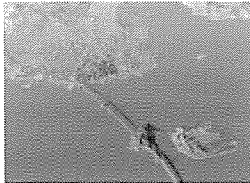
[Home](#) > [Ideas](#) > [Articles](#) > Treasure Island Selected For Newly Launched Climate Positive Devel...

- [Ideas](#)
- [Projects](#)
- [People](#)
- [Contact](#)

Treasure Island Selected for Climate Positive Development Program



[View Images of Treasure Island](#)



[Click for Images of Treasure Island](#)

New Clinton Climate Initiative program to demonstrate economic, environmental strategies for sustainable growth.

May 19, 2009 -- (San Francisco, CA) - The [Treasure Island Redevelopment Project](#) was announced today as one among 16 founding projects of the Climate Positive Development Program, a Clinton Climate Initiative (CCI) program that will support the development of large-scale urban projects that demonstrate cities can grow in ways that are "climate positive." Climate Positive real estate developments will strive to reduce the amount of on-site CO₂ emissions to below zero.

emissions to below zero.

The Climate Positive Development Program was launched by President Clinton, Founder of the William J. Clinton Foundation, on May 19, 2009, at the C40 Summit in Seoul, South Korea. Along with the other founding projects, Treasure Island will demonstrate Climate Positive strategies, setting a compelling environmental and economic example for cities to follow.

To reduce the net greenhouse gas emissions of their Climate Positive Development projects to below zero, property developers and local governments will agree to work in partnership on specific areas of activity. This includes implementing economically viable innovations in buildings, the generation of clean energy, waste management, water management, and transportation and outdoor lighting systems.

Last year, for the first time, half the world's population (3.2 billion people) lived in cities, and that figure is expected to grow to 70 percent by 2050. Cities also occupy just 2 percent of the world's landmass, yet are responsible for more than two-thirds of global energy use and greenhouse gas emissions. How cities change and grow is therefore a critical component to tackling the climate crisis.

San Francisco Mayor Gavin Newsom stated, "I see this partnership as a tremendous opportunity to spur the creation of one of the first climate positive developments in the world, one that will serve as a stunning testament to San Francisco's long-standing values of environmental leadership."

Former Naval Station Treasure Island, consisting of 450 acres on Treasure Island and Yerba Buena Island, offers a prime location in the heart of the San Francisco Bay with stunning views of San Francisco's skyline. It also offers a once-in-a-lifetime opportunity to create a forward-thinking model for creation of a new mixed-use community, and a regional destination, based on the principles of sustainable development. The mixed-use, urban infill, brownfields redevelopment is clustered around an inter modal ferry terminal to prioritize walking, biking and public transit. The Project's unique approach to integrating horizontal and vertical program components is a key driver for realizing the goal of becoming the most sustainable large development projects in U.S. history.

"TICD is honored to partner with CCI on its award-winning Treasure Island Project, an international model of Climate Positive Development with its innovative, comprehensive approach to energy, water, waste, environmental and transportation solutions in delivering an unprecedented package of environmental, social and economic benefits" said a representative from Treasure Island Community Development, LLC.

By combining CCI's business and finance expertise with the technical knowledge of the USGBC, the Climate Positive Development program will support the planning and implementation process for each real estate development and establish the standards and metrics by which the sites can measure climate positive outcomes.

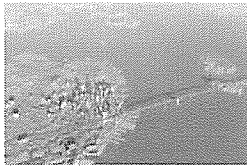
When the initial 16 projects are completed, nearly one million people will live and work in Climate Positive communities. These communities will be located in Melbourne, Australia; Palthoca, Brazil; Toronto, Canada; Victoria, Canada; Ahmedabad, India; Jaipur, India; outside Panama City, Panama; Pretoria, South Africa; Johannesburg, South Africa; Seoul, South Korea; Stockholm, Sweden; London, UK; San Francisco, USA and Destiny Florida, USA.

About the Clinton Climate Initiative

The William J. Clinton Foundation launched the Clinton Climate Initiative (CCI) to create and advance solutions to the core issues driving climate change. Working with governments and businesses around the world to tailor local solutions that are economically and environmentally sustainable, CCI focuses on three strategic program areas: increasing energy efficiency in cities, catalyzing the large-scale supply of clean energy, and working to measure and value the carbon absorbed by forests. In each of these programs, CCI uses a holistic approach to address the major

value the carbon absorbed by forests. In each of these programs, CCI uses a holistic approach to address the major sources of greenhouse gas emissions and the people, policies, and practices that impact them. CCI serves as the action arm of the C40, an association of large cities around the world that have pledged to accelerate their efforts to reduce greenhouse gas emissions. To learn more about the work of the Clinton Climate Initiative and the William J. Clinton Foundation, please visit www.clintonfoundation.org.

ABOUT THE MASTER PLAN



[Treasure Island Master Plan](#)
[San Francisco, California](#)

READ MORE

[Clinton Climate Initiative To Demonstrate Model For Sustainable Urban Growth With Projects In 10 Countries On Six Continents](#)

[About the William J. Clinton Foundation and Clinton Climate Initiative](#)

[Download PDF of press release](#)

Treasure Island ... offers a once-in-a-lifetime opportunity ... for creation of a new mixed-use community, and a regional destination, based on the principles of sustainable development. The mixed-use, urban infill, brownfields redevelopment is clustered around an inter modal ferry terminal to prioritize walking, biking and public transit. The Project's unique approach to integrating horizontal and vertical program components is a key driver for realizing the goal of becoming the most sustainable large development projects in U.S. history.

